

Ventspils Ganību iela

Installation : Apgaismojums

Project number : 5

Customer : VPBP

Processed by : Auseklis Mūzis

Date : 16.04.2018

The following values are based on exact calculations on calibrated lamps, luminaires and their arrangement. In practice, gradual divergences can occur.

Guarantee claims for luminaire data are excluded.

Relux and the luminaire manufacturers accept no liability for consequential damage and damage which is occasioned to the user or to third parties.

1 Luminaire data

1.1 MRS 035 730 L04 A016 S... (Mini Martin 35 ...)

1.1.1 Data sheet

Mini Martin 35 W 16 LEDs

MRS 035 730 L04 A016 SN DG1_O40_Bin-N3_TH

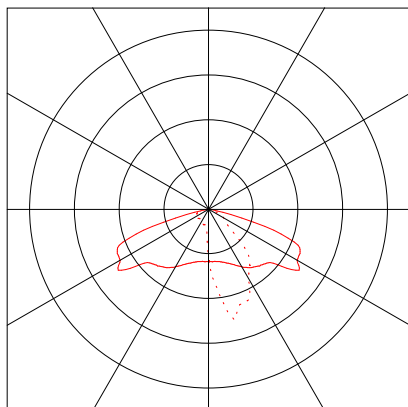
Luminaire data

Absolute Photometry
Luminaire efficacy : 120.5 lm/W
Classification : A30 100.0% ↑0.0%
CIE Flux Codes : 41 74 98 100 100
Glare : G*3 / D5
Power : 35 W
Luminous flux : 4217.6 lm

Equipped with

Quantity : 1
Designation : 16 LEDs bin N3
Colour : 3000 K
Colour reproduction : 72

Dimensions : 520 mm x 220 mm x 90 mm



1 Luminaire data

1.2 MRS 035 730 L22 A016 S... (Mini Martin 35 ...)

1.2.1 Data sheet

Mini Martin 35 W 16 LEDs

MRS 035 730 L22 A016 SN DG1_O40_Bin-N3_TH

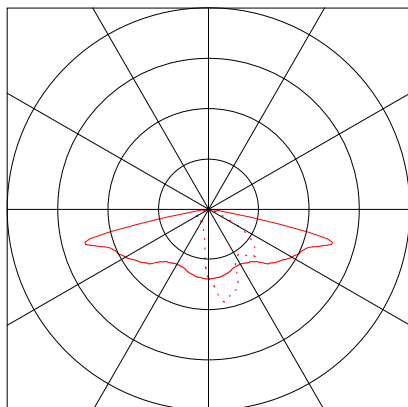
Luminaire data

Absolute Photometry
Luminaire efficacy : 115.68 lm/W
Classification : A20 100.0% ↑0.0%
CIE Flux Codes : 32 64 94 100 100
Glare : G*2 / D4
Power : 35 W
Luminous flux : 4048.9 lm

Equipped with

Quantity : 1
Designation : 16 LEDs bin N3
Colour : 3000 K
Colour reproduction : 72

Dimensions : 520 mm x 220 mm x 90 mm



Object : Ventspils Ganību iela
Installation : Apgaismojums
Project number : 5
Date : 16.04.2018

RELUX®

1 Luminaire data

1.3 WE-EF;Eulumdat2, ETV120 [LEE] IP67:2LED-60/7.5W/... (186-0245)

1.3.1 Data sheet

Manufacturer: WE-EF;Eulumdat2

186-0245 ETV120 [LEE] IP67:2LED-60/7.5W/3K;ETV120, Inground Luminaires

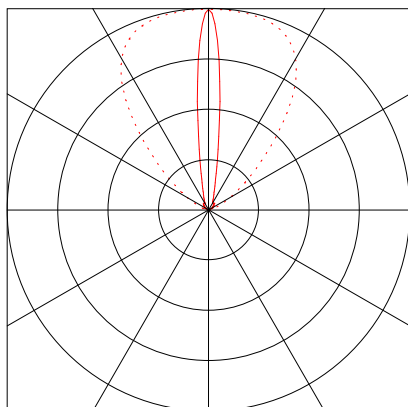
Luminaire data

Luminaire efficiency : 81.4%
Luminaire efficacy : 91.58 lm/W
Classification : E24 0.3% ↑99.7%
CIE Flux Codes : 24 48 73 0 82
UGR 4H 8H : <10.0 / <10.0
Power : 20 W
Luminous flux : 1831.5 lm

Equipped with

Quantity : 120
Designation : LED-60/7,5W -
3000K
Colour : 3000K
Luminous flux : 18.8 lm
Colour reproduction : 80

Dimensions : 627 mm x 48 mm x 42 mm



Object : Ventspils Ganību iela
Installation : Apgaismojums
Project number : 5
Date : 16.04.2018

RELUX®

1 Luminaire data

1.4 WE-EF;Eulumdat2, ETC330-GB [A20] VA:IP67:LED-12/... (185-3095)

1.4.1 Data sheet

Manufacturer: WE-EF;Eulumdat2

185-3095 ETC330-GB [A20] VA:IP67:LED-12/12W/3K;ETC330 GB, Inground Luminaires

Luminaire data

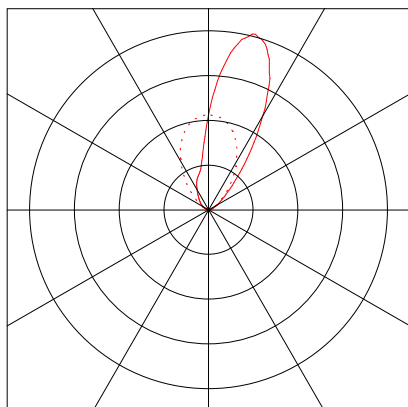
Luminaire efficiency : 69.9%
Luminaire efficacy : 80.58 lm/W
Classification : E44 1.1% ↑98.9%
CIE Flux Codes : 41 69 88 1 71
UGR 4H 8H : <10.0 / <10.0
Power : 14 W
Luminous flux : 1128.2 lm

Equipped with

Quantity : 12
Designation :

Colour : 3000K
Luminous flux : 134.5 lm
Colour reproduction : 80

Dimensions : Ø250 mm x 180 mm



1 Luminaire data

1.5 WE-EF;Eulumdat2, ESC130 [EES] VA:IP67:LED-12/18W... (185-3081)

1.5.1 Data sheet

Manufacturer: WE-EF;Eulumdat2

185-3081 ESC130 [EES] VA:IP67:LED-12/18W/3K;ESC130 LED, Inground Luminaires

Luminaire data

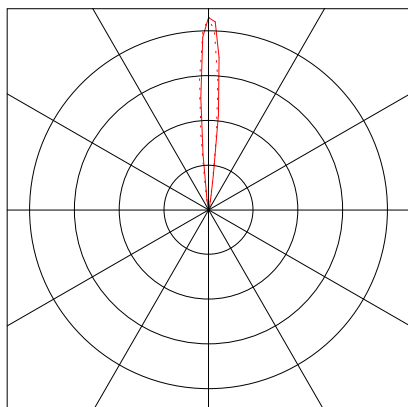
Luminaire efficiency : 70.5105%
Luminaire efficacy : 74.44 lm/W
Classification : E24 0.0% ↑ 100.0%
CIE Flux Codes : 25 50 74 0 71
UGR 4H 8H : <10.0 / <10.0
Power : 21 W
Luminous flux : 1563.2 lm

Equipped with

Quantity : 12
Designation :

Colour : 3000K
Luminous flux : 184.8 lm
Colour reproduction : 80

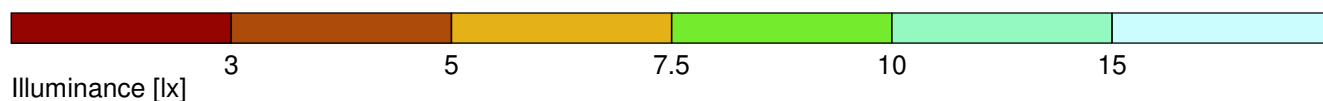
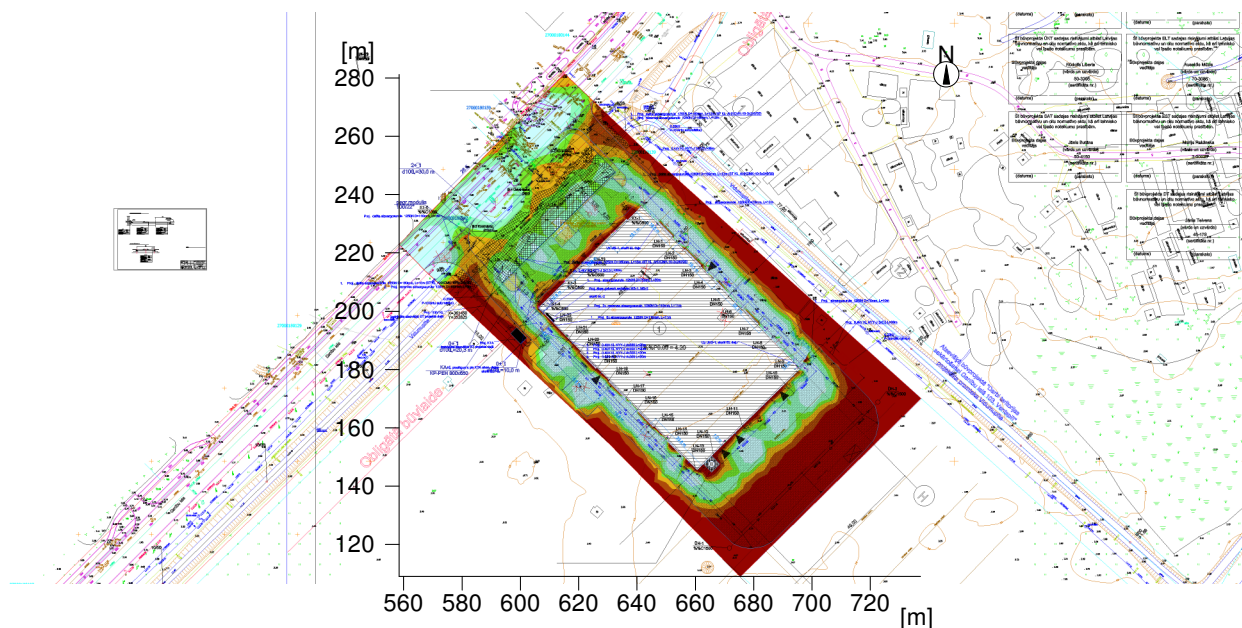
Dimensions : Ø250 mm x 395 mm



2 Teritorija

2.1 Summary, Teritorija

2.1.1 Result overview, Evaluation area 1



General

Calculation algorithm used
 Maintenance factor

Average indirect fraction
 0.80

Total luminous flux of all lamps
 (Luminaires have been dimmed. For details turn to the dimming section in the luminaire data output.)

168678.59 lm (100.00% dimmed)

Total power
 Total power per area (13645.67 m²)

1414.0 W
 0.10 W/m² (1.33 W/m²/100lx)

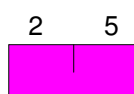
Evaluation area 1

Reference plane 1.1

Horizontal
 Em
 Emin
 Emin/Eav (Uo)
 Emin/Emax (Ud)
 Position

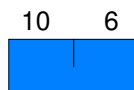
7.77 lx
 0.04 lx
 0.01
 0.00
 0.20 m

Type No.\Make



2 5

Order No. : Mini Martin 39 W 24 LEDs
 Luminaire name : MRS 039 740 L37 A024 SF DG1_O60_Bin-N4_TH
 Equipment : 1 x 24 LEDs bin N4 39 W / 5258.96 lm



10 6

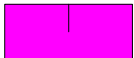
Order No. : Mini Martin 35 W 16 LEDs
 Luminaire name : MRS 035 730 L37 A016 SF DG1_O40_Bin-N3_TH
 Equipment : 1 x 16 LEDs bin N3 35 W / 4375.32 lm


2 Teritorija


2.1 Summary, Teritorija

2.1.1 Result overview, Evaluation area 1

11 10
 Order No. : Mini Martin 35 W 16 LEDs
Luminaire name : MRS 035 730 L04 A016 SN DG1_O40_Bin-N3_TH
Equipment : 1 x 16 LEDs bin N3 35 W / 4217.59 lm

13 3
 **Philips Lighting**
Order No. :
Luminaire name : SGP340 C PC 1xCPO-TW140W EB_728
Equipment : 1 x CPO-TW140W/728 153 W / 16500 lm

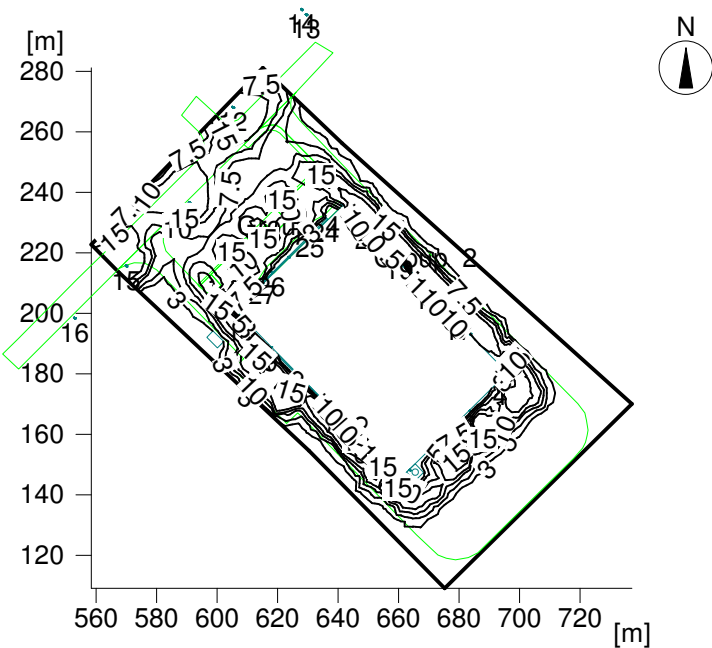
14 4
 **WE-EF;Eulumdat2**
Order No. : 185-2583
Luminaire name : ETC330-GB [EES] VA:IP67:LED-12/12W/3K;ETC330 GB, Inground
Luminaires
Equipment : 12 x LED-12/12W/830 - 3000K / 134.5 lm

16 4
 Order No. : 186-0278
Luminaire name : ETV140 [LA10] IP67:4LED-60/7.5W/3K;ETV140, Inground Lumina
ires
Equipment : 240 x LED-60/7,5W - 3000K / 18.75 lm

2 Teritorija

2.2 Calculation results, Teritorija

2.2.1 Isolines representation, Reference plane 1.1 (E)

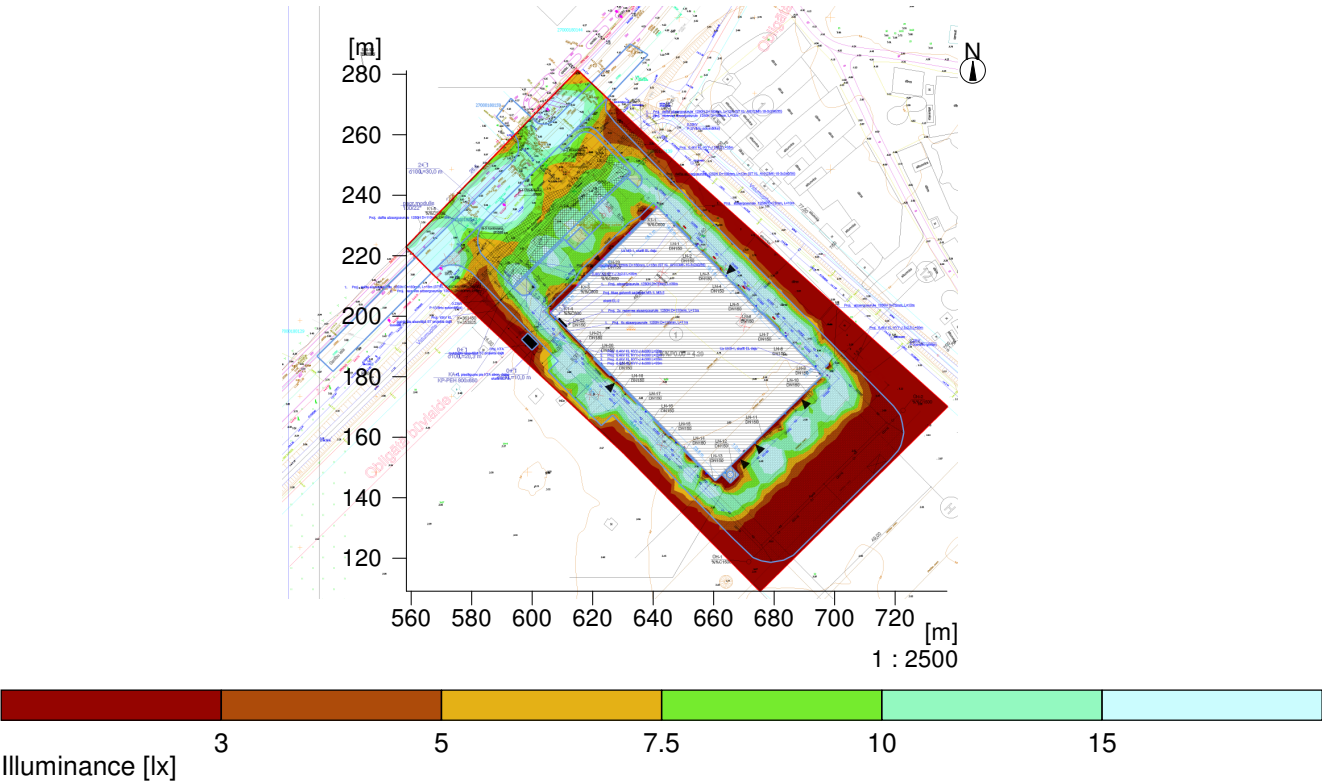


Illuminance [lx]

Height reference plane	: 0.20 m
Average illuminance	Eav : 7.8 lx
Minimum illuminance	Emin : 0 lx
Maximum illuminance	Emax : 30.5 lx
Uniformity Uo	Emin/Eav : 1 : 194.07 (0.01)
Diversity Ud	Emin/Emax : 1 : 761.42 (0.00)

2.2 Calculation results, Teritorija

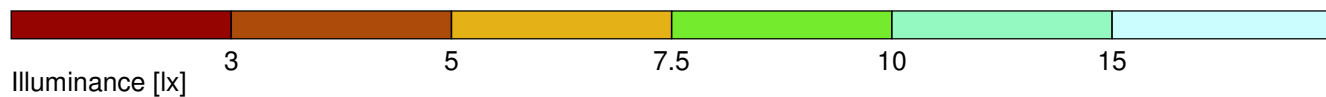
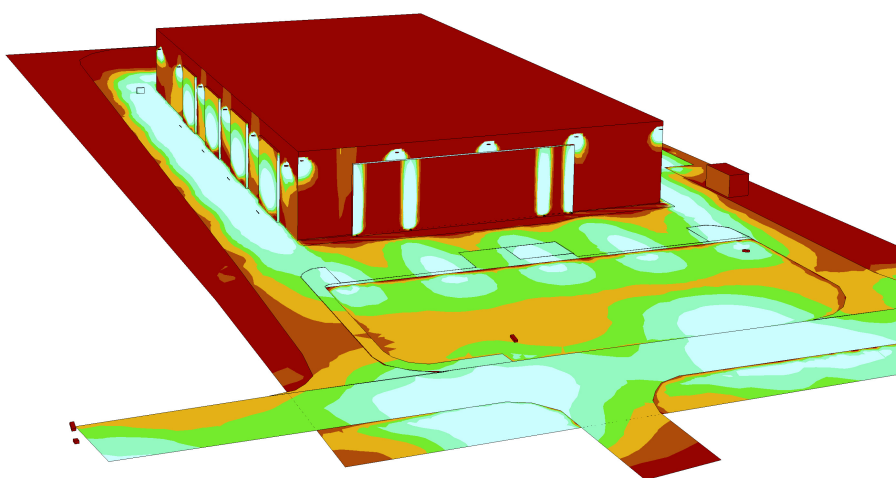
2.2.2 Pseudo colours, Reference plane 1.1 (E)



Height reference plane		: 0.20 m
Average illuminance	Eav	: 7.8 lx
Minimum illuminance	Emin	: 0 lx
Maximum illuminance	Emax	: 30.5 lx
Uniformity Uo	Emin/Eav	: 1 : 194.07 (0.01)
Diversity Ud	Emin/Emax	: 1 : 761.42 (0.00)

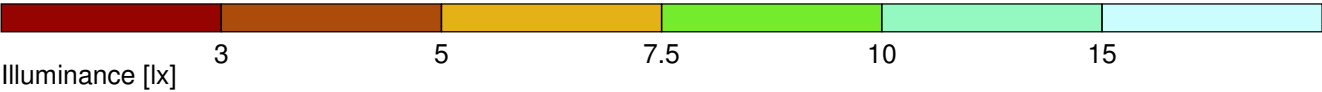
2.2 Calculation results, Teritorija

2.2.3 3D pseudo colours, View 1 (E)



2.2 Calculation results, Teritorija

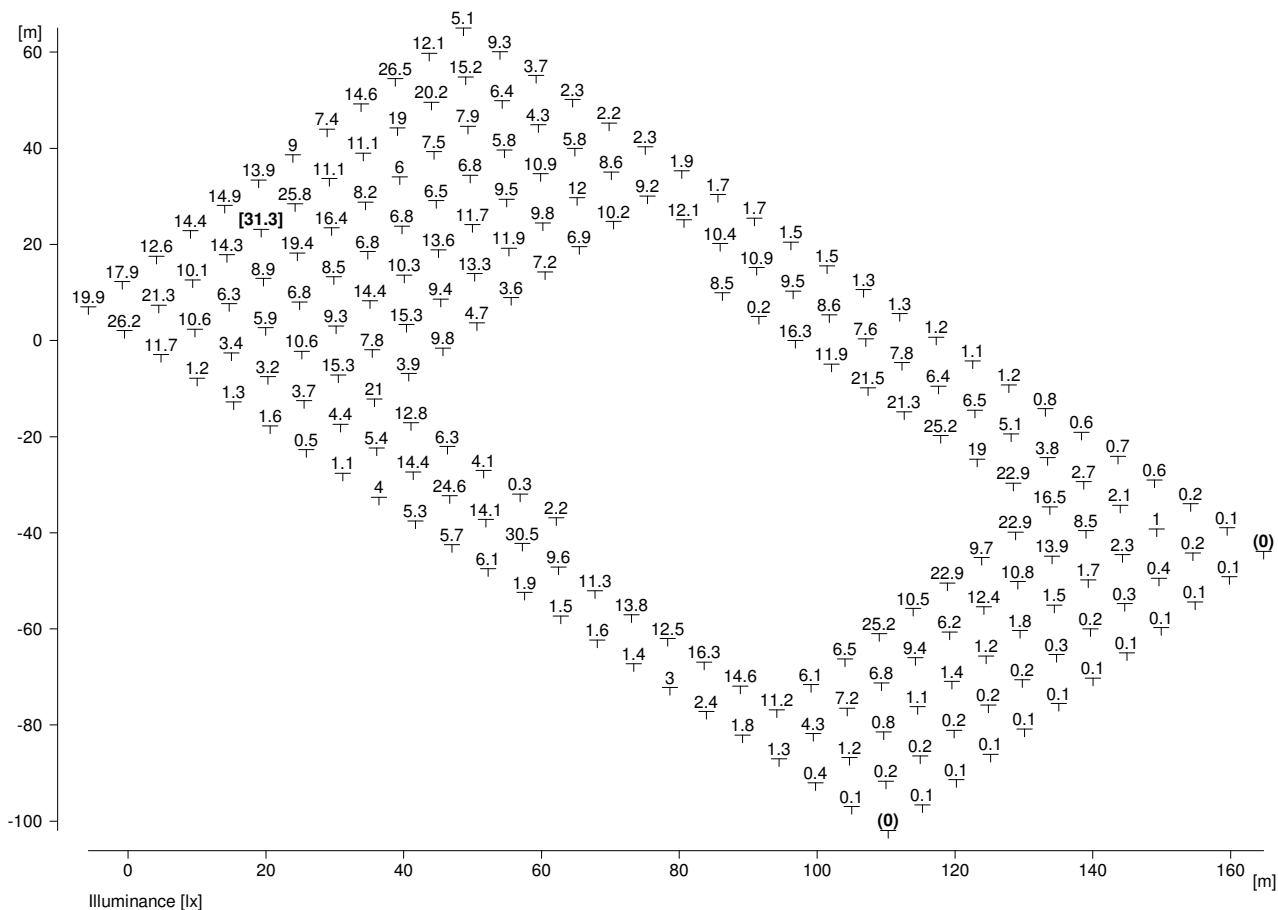
2.2.4 3D pseudo colours, View from the left (E)



3 Teritorija11

3.1 Calculation results, Teritorija11

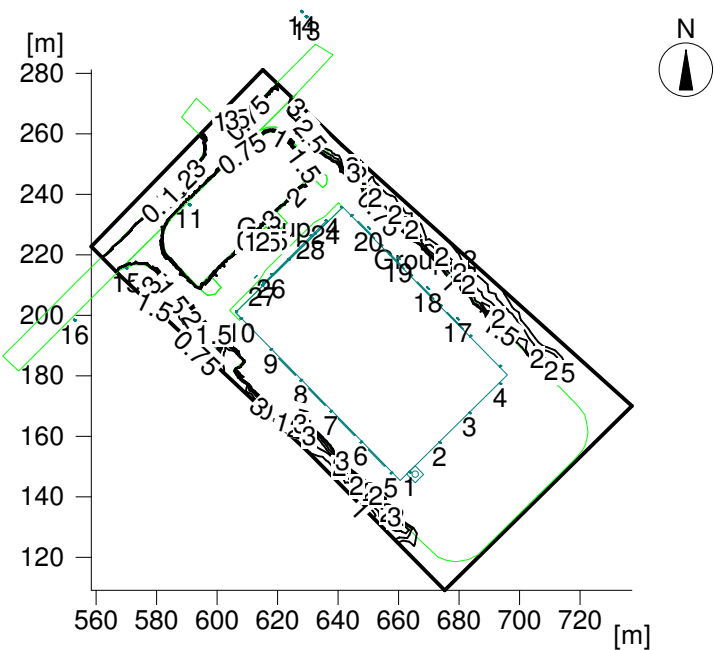
3.1.1 Table, Reference plane 1.1 (E)



Height reference plane	: 0.20 m
Average illuminance	Eav : 7.8 lx
Minimum illuminance	Emin : 0 lx
Maximum illuminance	Emax : 31.3 lx
Uniformity Uo	Emin/Eav : 1 : 195.70 (0.01)
Diversity Ud	Emin/Emax : 1 : 786.02 (0.00)

3.1 Calculation results, Teritorija11

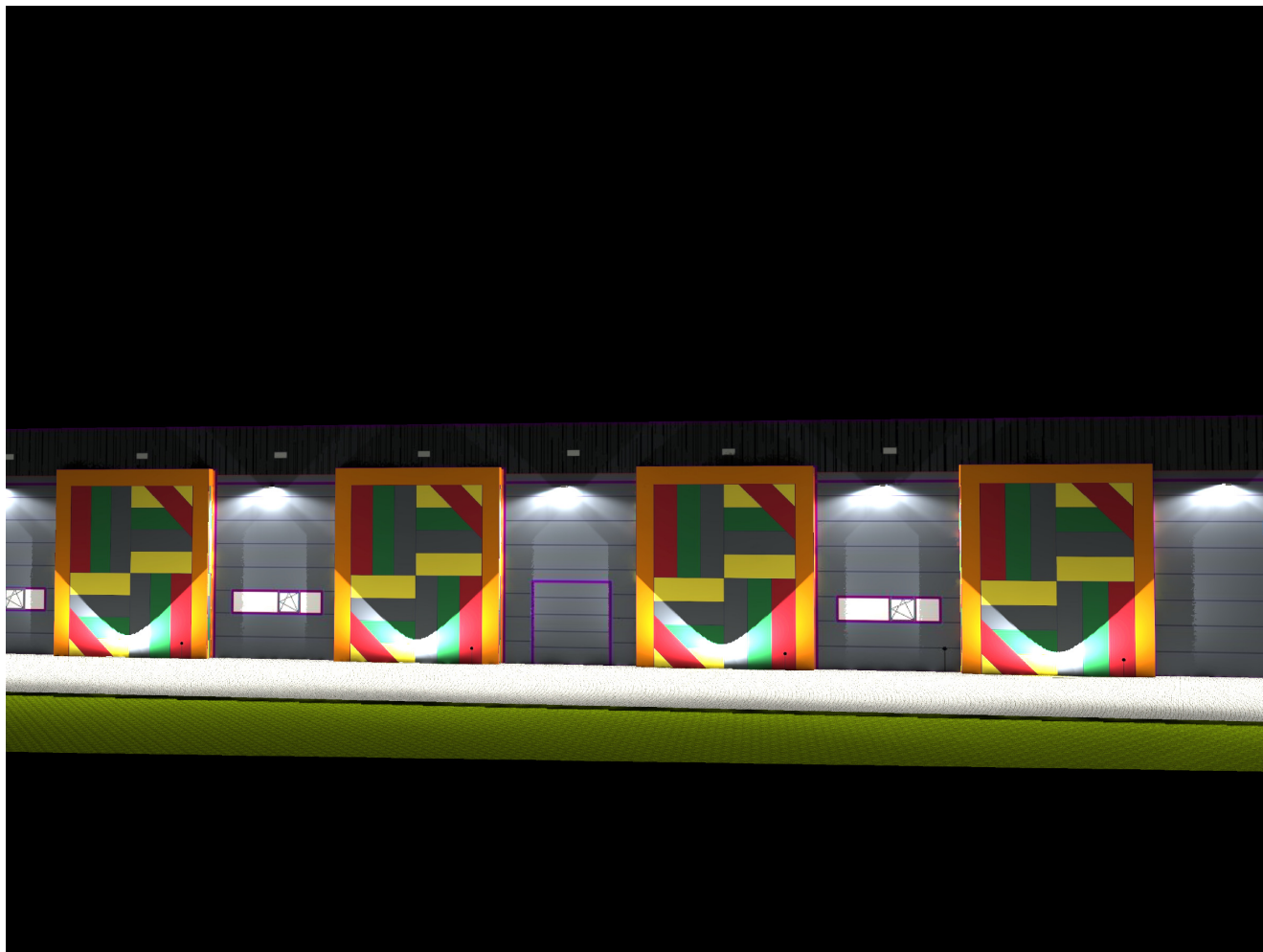
3.1.2 Isolines representation, Floor (E)



3 Teritorija11

3.2 Calculation results, Teritorija11

3.2.1 3D luminance (raytracing), Variable view



Luminance in the illustration:

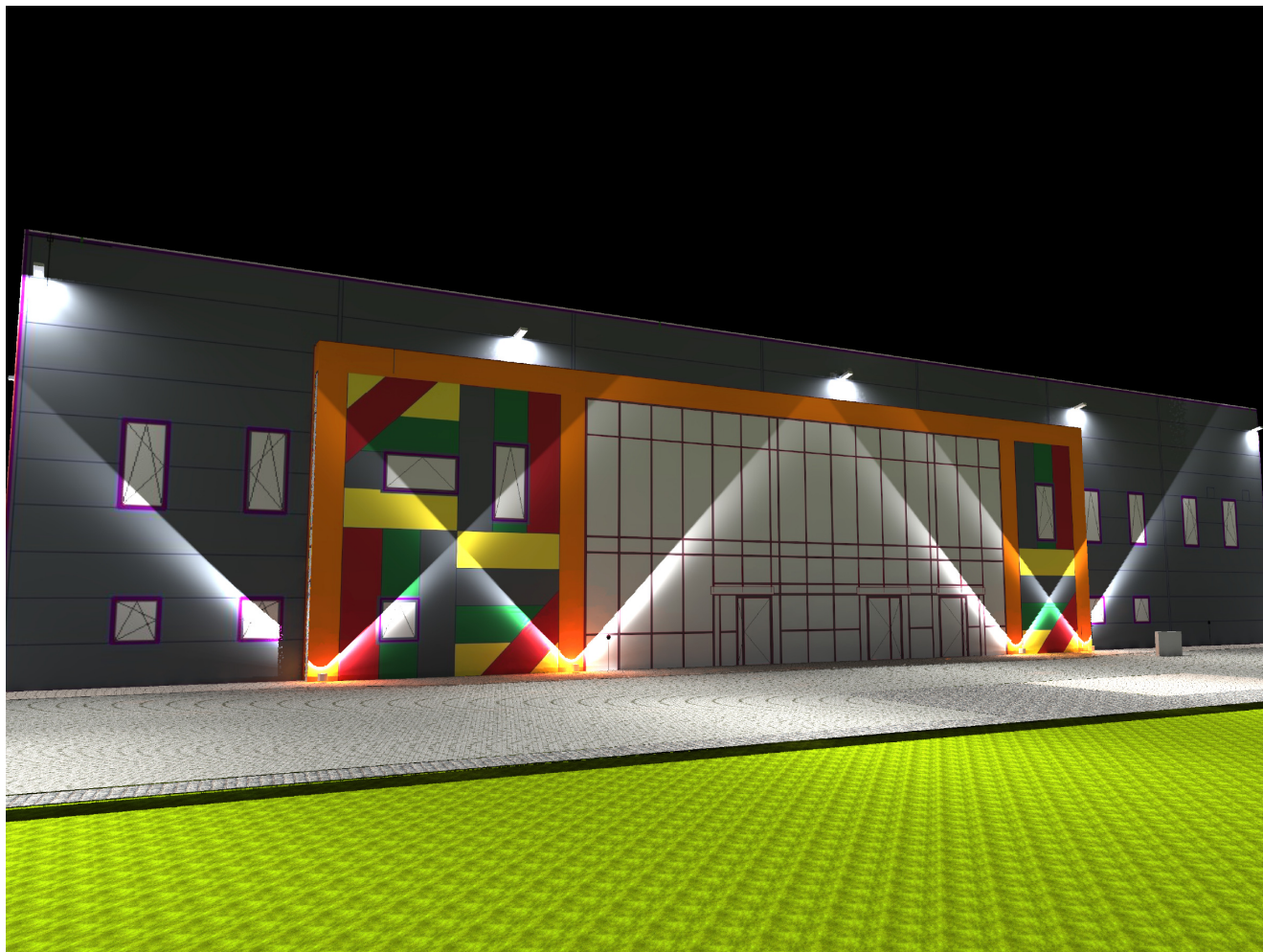
Minimum: : 0 cd/m²

Maximum: : 386 cd/m²

Artificial light calculation : Direct part, with 2 inter-reflections

3.2 Calculation results, Teritorija11

3.2.2 3D luminance (raytracing), Variable view



Luminance in the illustration:

Minimum: : 0 cd/m²

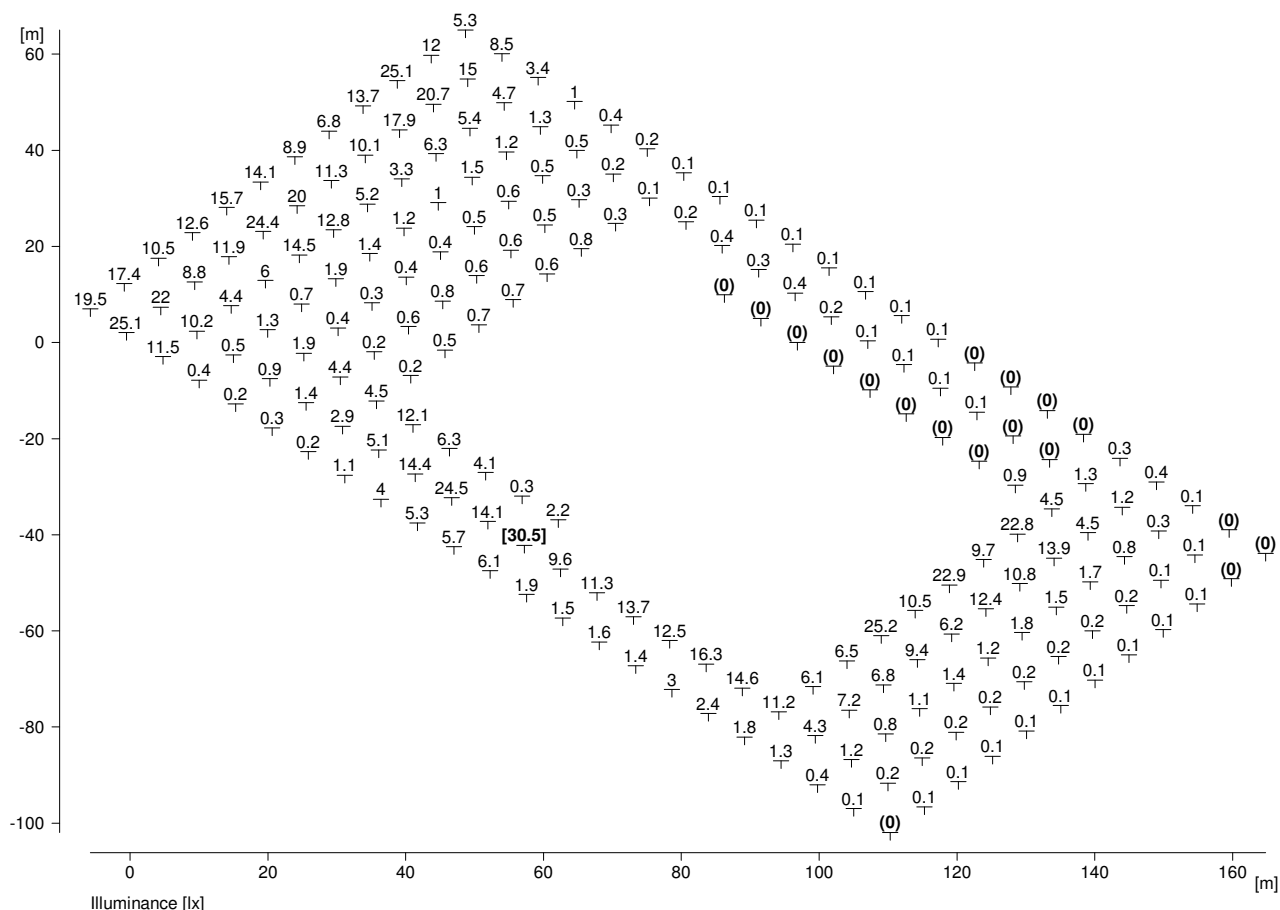
Maximum: : 49100 cd/m²

Artificial light calculation : Direct part, with 2 inter-reflections

4 Teritorija12

4.1 Calculation results, Teritorija12

4.1.1 Table, Reference plane 1.1 (E)



Height reference plane	: 0.20 m
Average illuminance	Eav : 4.6 lx
Minimum illuminance	Emin : 0 lx
Maximum illuminance	Emax : 30.5 lx
Uniformity Uo	Emin/Eav : 1 : 409.87 (0.00)
Diversity Ud	Emin/Emax : 1 : 2705.32 (0.00)